



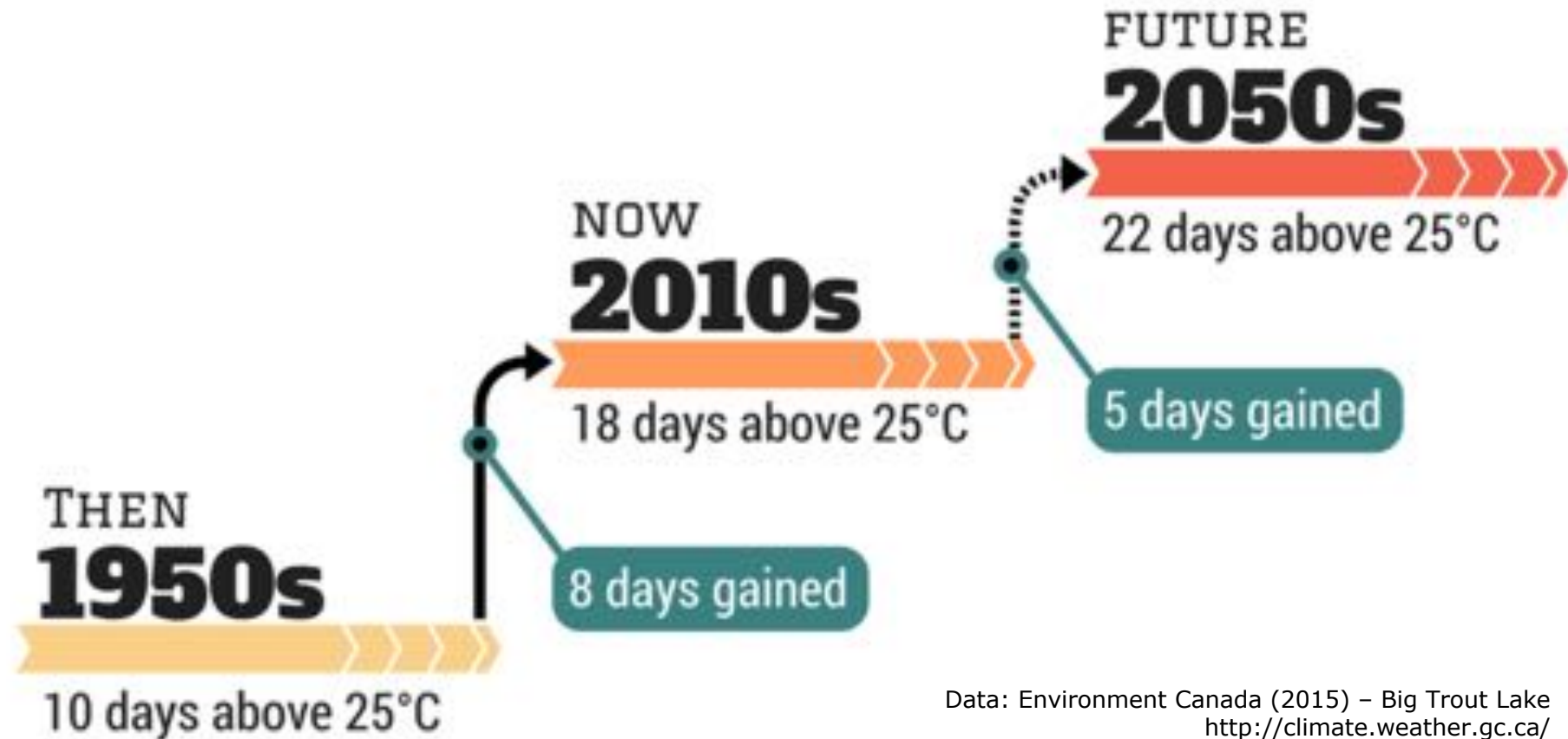
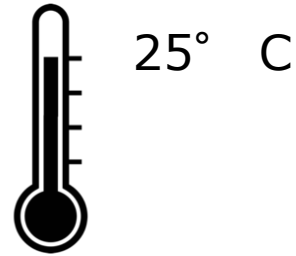
Up North on Climate Conference

David Pearson,
School of the Environment,
Laurentian University.

24 April, 2018

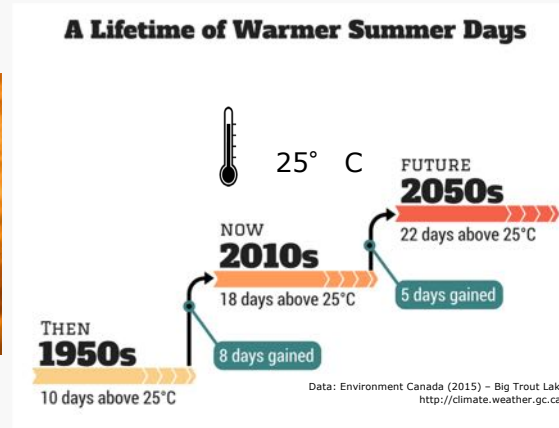
dpearson@laurentian.ca

A Lifetime of Warmer Summer Days



Data: Environment Canada (2015) – Big Trout Lake
<http://climate.weather.gc.ca/>

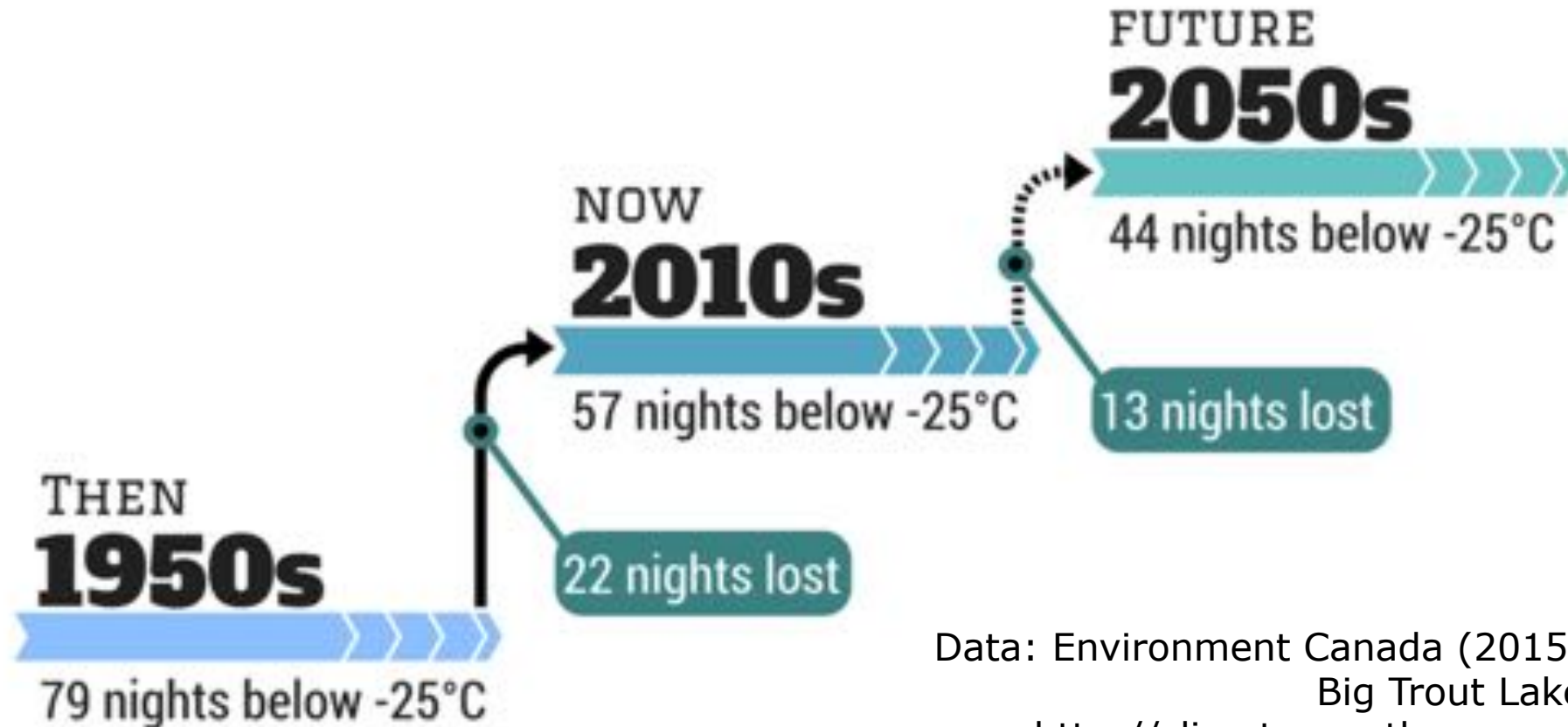
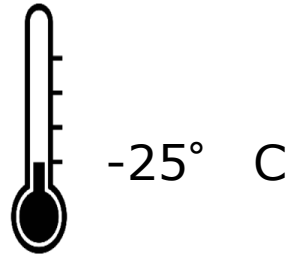
Very hot summer days



Have Elders or very young children in your community suffered heat stress during extreme hot weather? More frequently than in the past?

How have people dealt with heat stress?

A Lifetime of Fewer Very Cold Nights



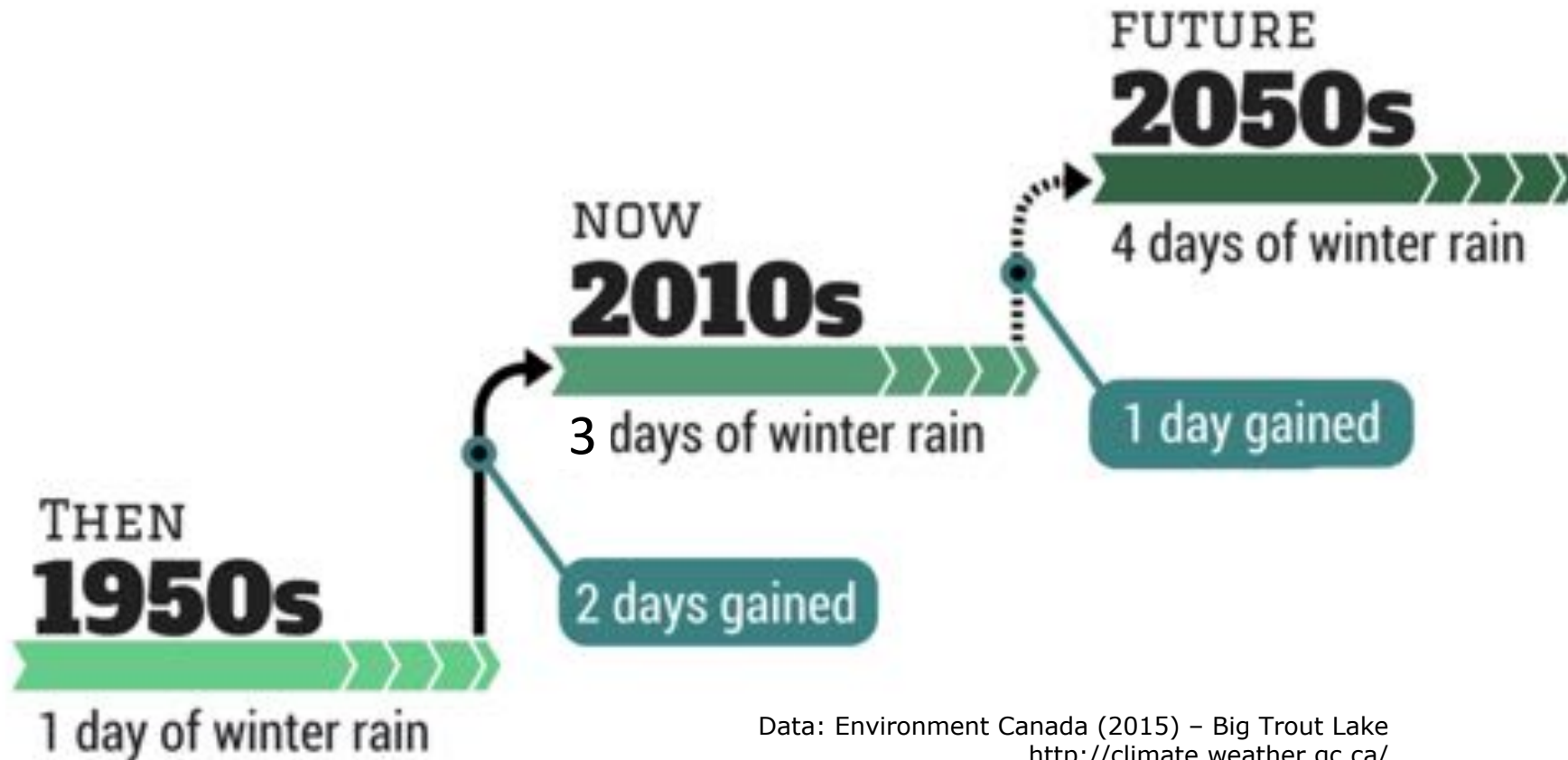
Data: Environment Canada (2015)
Big Trout Lake
<http://climate.weather.gc.ca/>

10 Dec 2009



Xavier Sagutch,
Eabametoong FN

A Lifetime of Wetter Winter Days



Data: Environment Canada (2015) – Big Trout Lake
<http://climate.weather.gc.ca/>



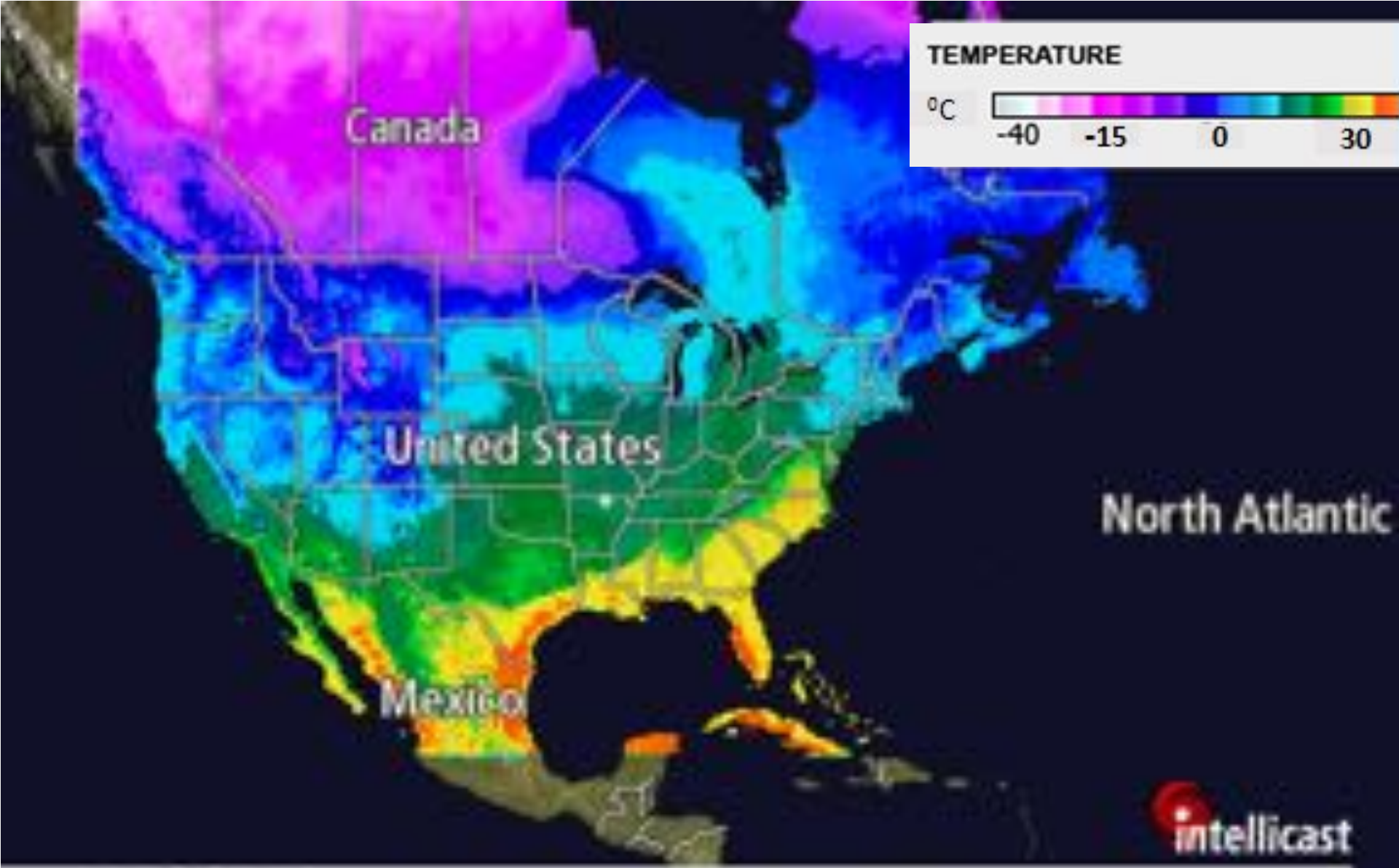
The destructive power of freezing rain





Freezing rain threatens vulnerable power grid

WAYNE THIBODEAU
The Guardian

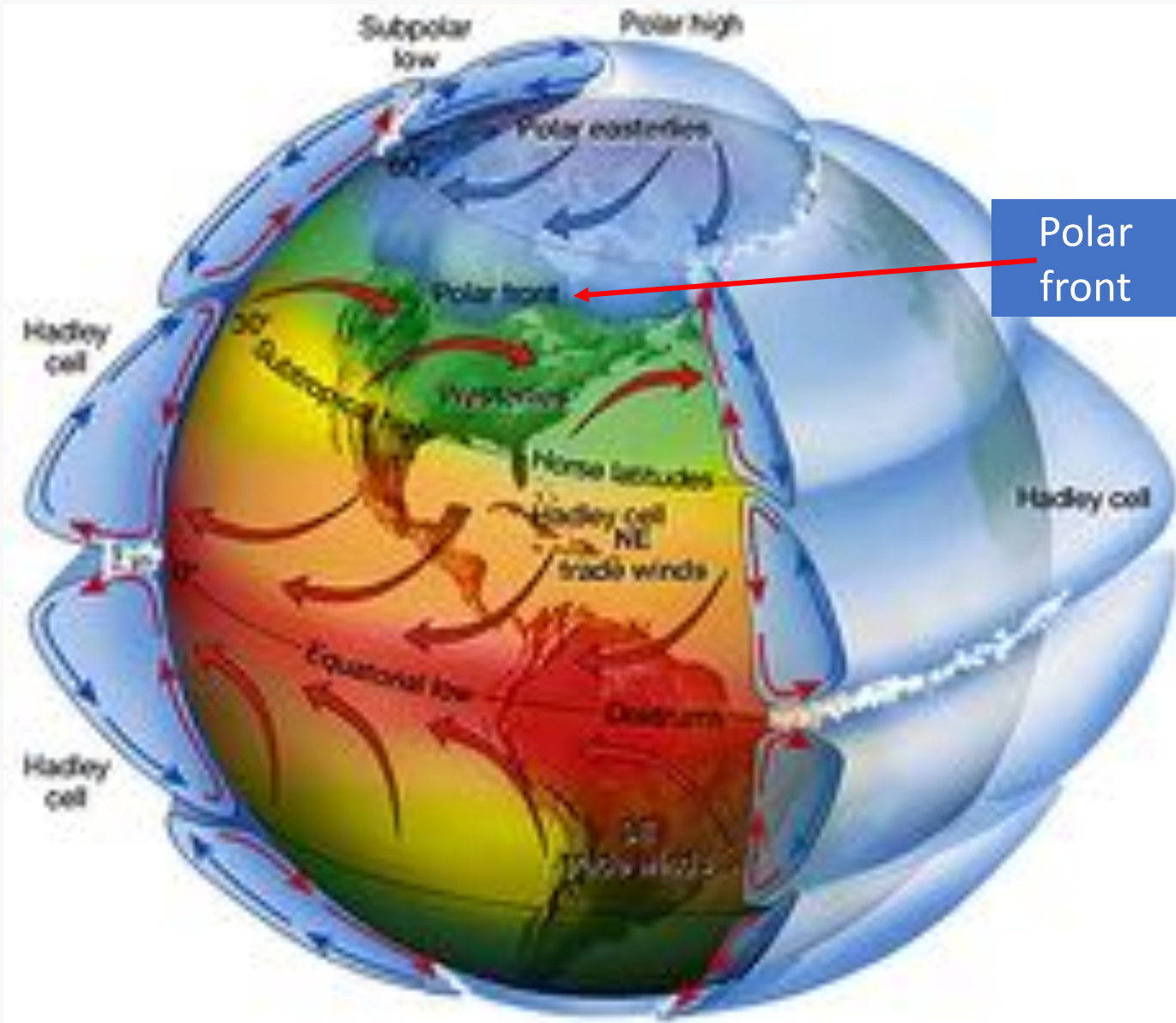




Future     slow | normal | fast

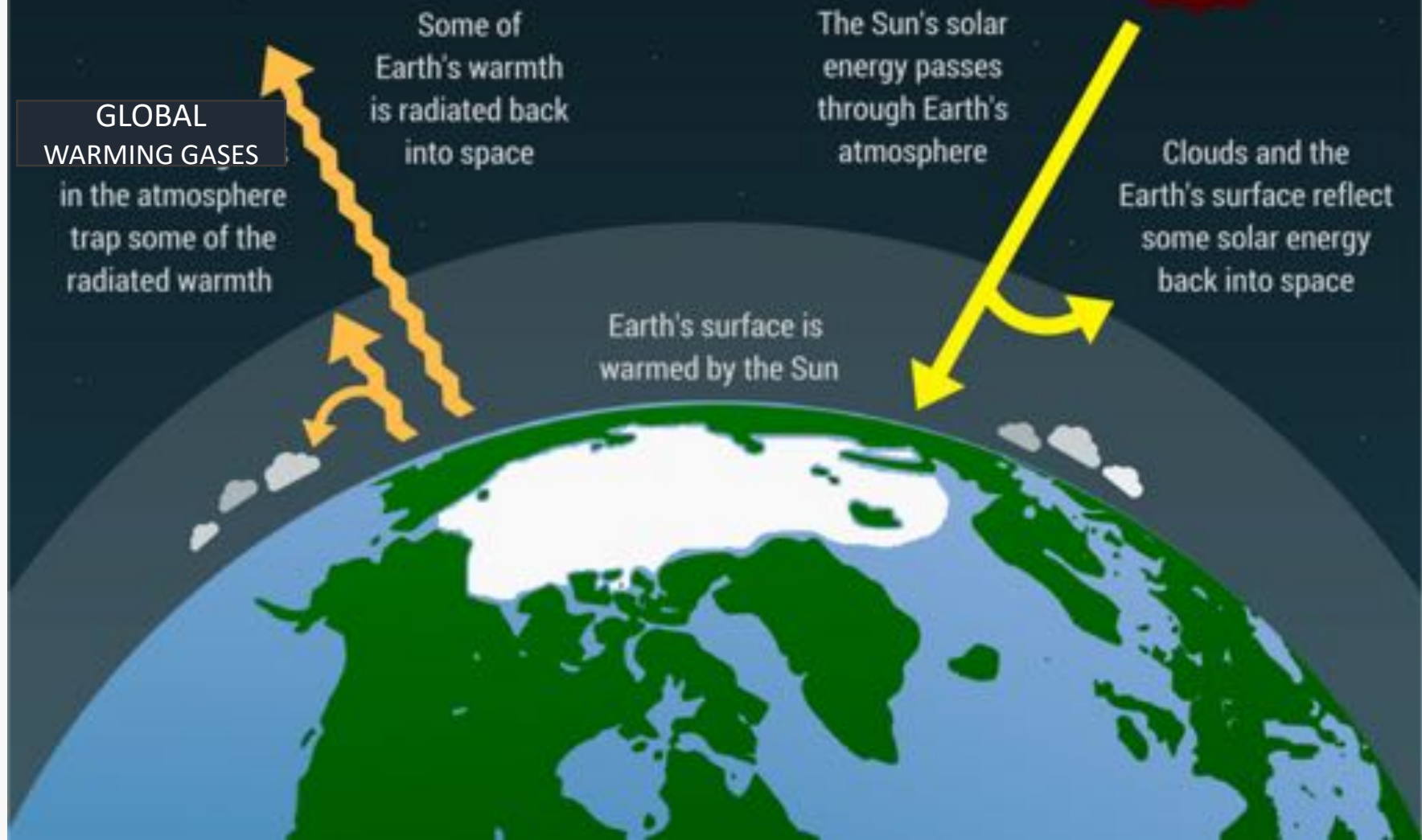
PAST 07 MAR 2017, 2:06:01 PM PRESENT





THE

GLOBAL WARMING GAS EFFECT



Coal burning power plant,
Shuozhou, Shanxi, China





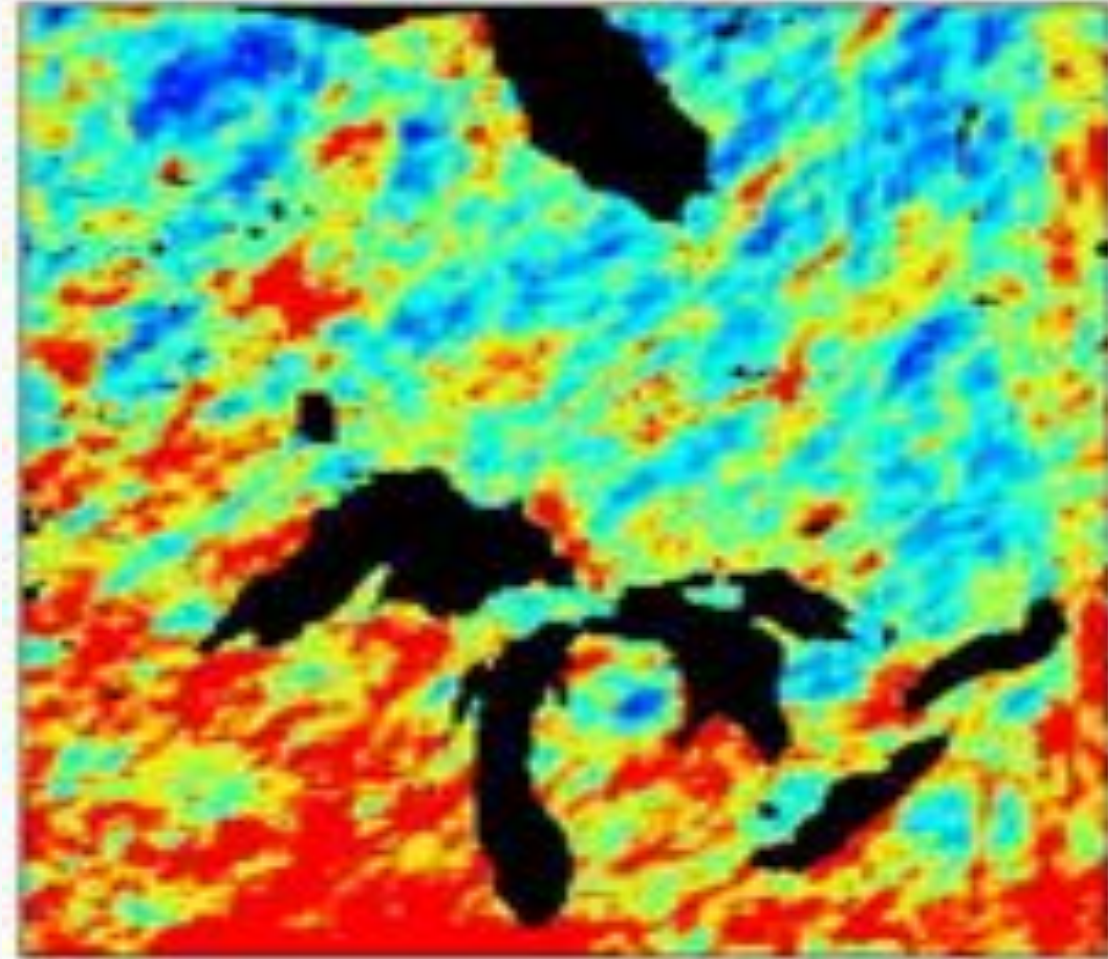
Future change in extreme rainfall

Rainfall during extreme events will increase by 14% – 29% by 2050

A once in 50 year rain event today will occur every 25 – 15 years

D'Orgeville and Peltier
JGR – Atmos. 2014

(2045-2060)







A satellite view of a landscape featuring a large, dark, irregularly shaped lake in the upper center. The surrounding terrain is a mix of green and brown, with numerous smaller, dark water bodies scattered throughout. A thin blue line is drawn on the map, extending from the right edge of the main lake towards the center. In the top right corner, there are faint circular icons for navigation. The overall scene is captured from an elevated perspective.

Wunnummin Lake

Image © 2017 DigitalGlobe
© 2017 Google
Image Landsat / Copernicus

Google Earth

Imagery Date: 5/14/2013 52°52'07.20" N 89°06'19.34" W elev. 804 ft eye alt. 15.77 mi

Tour Guide



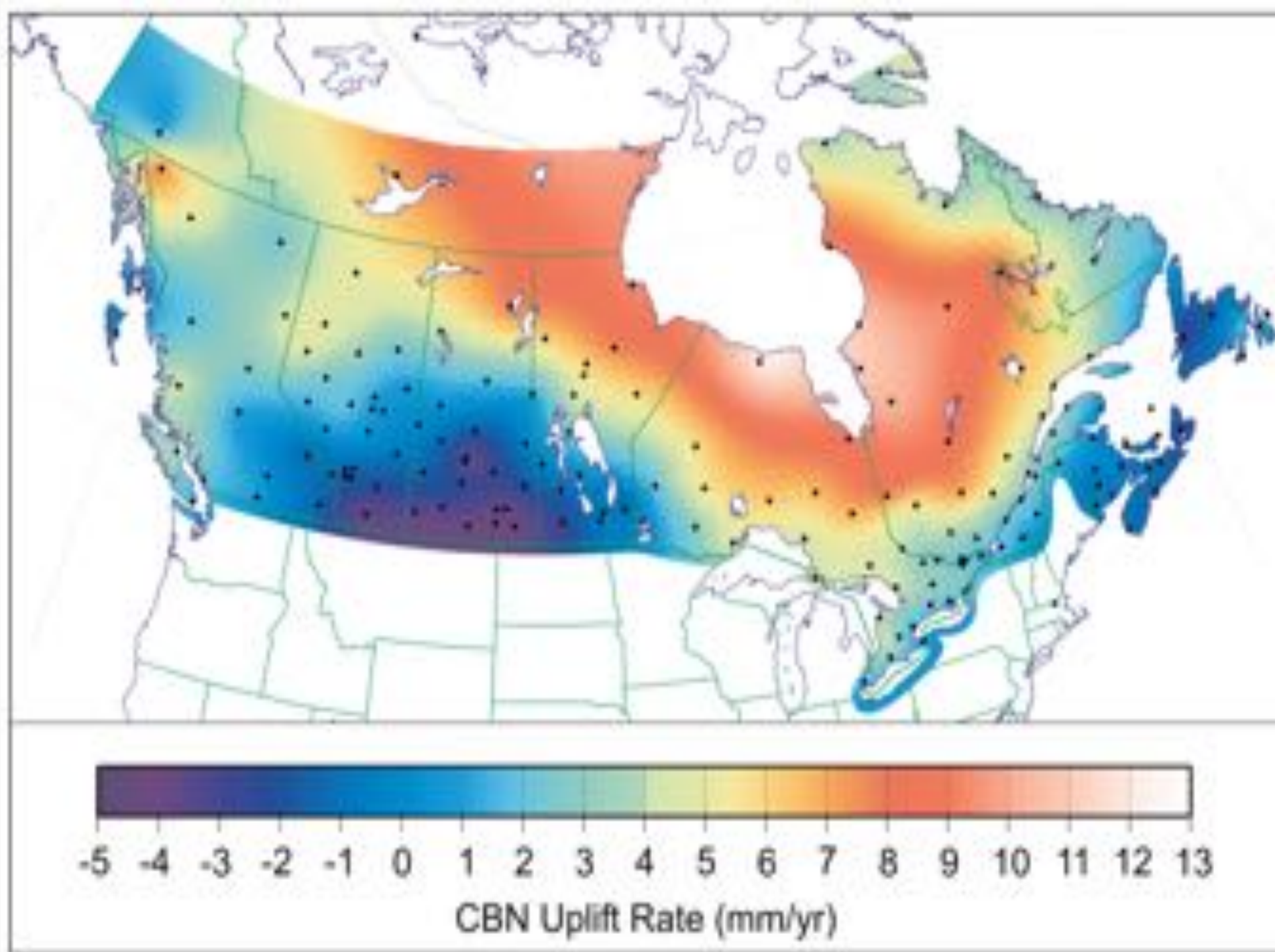
The two faces of Hudson Bay



Absorbing the Sun's energy
and warming the Fall breezes
over the Lowlands

Reflecting the Sun's energy
and cooling the Spring
breezes over the Lowlands

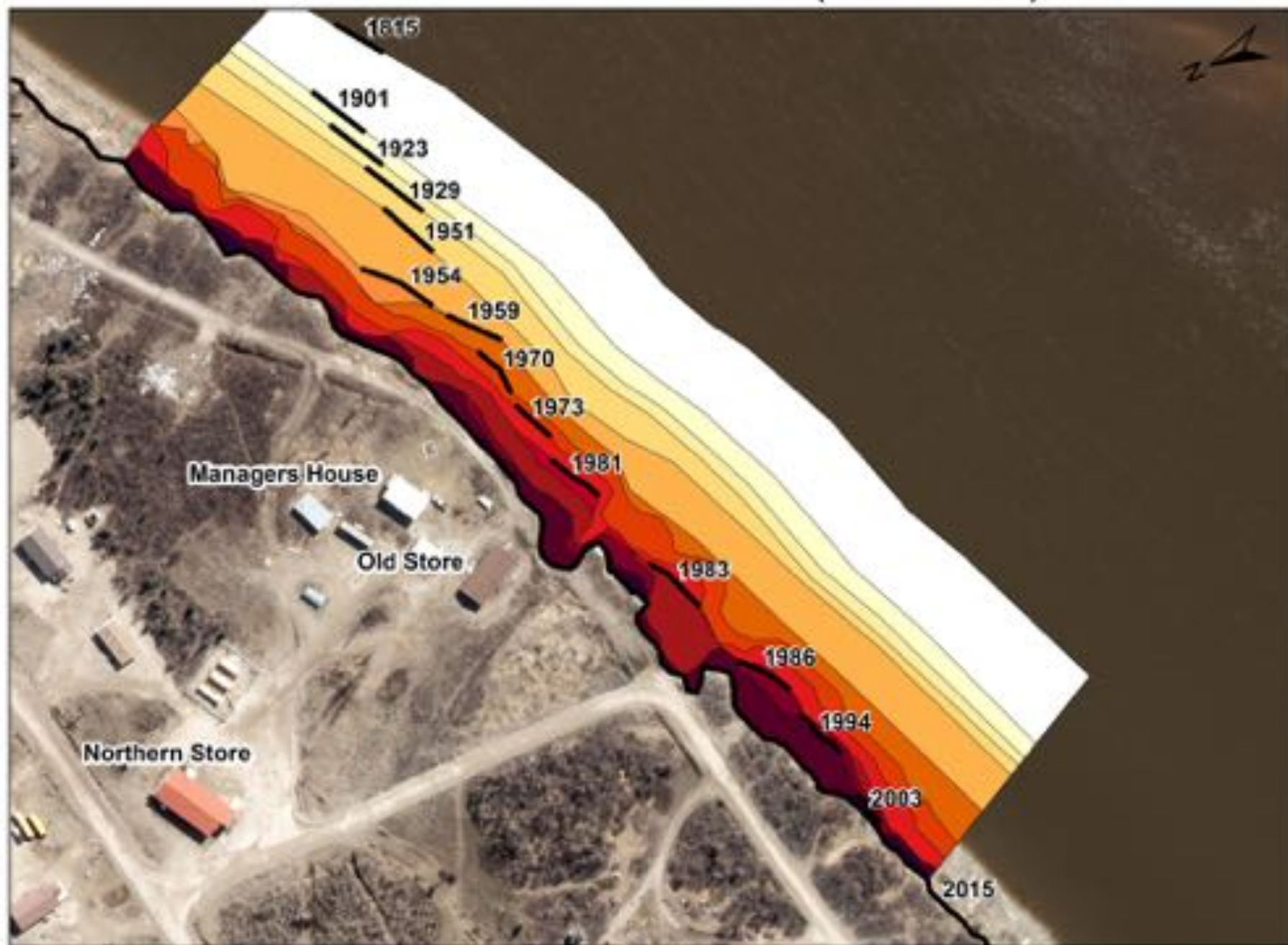






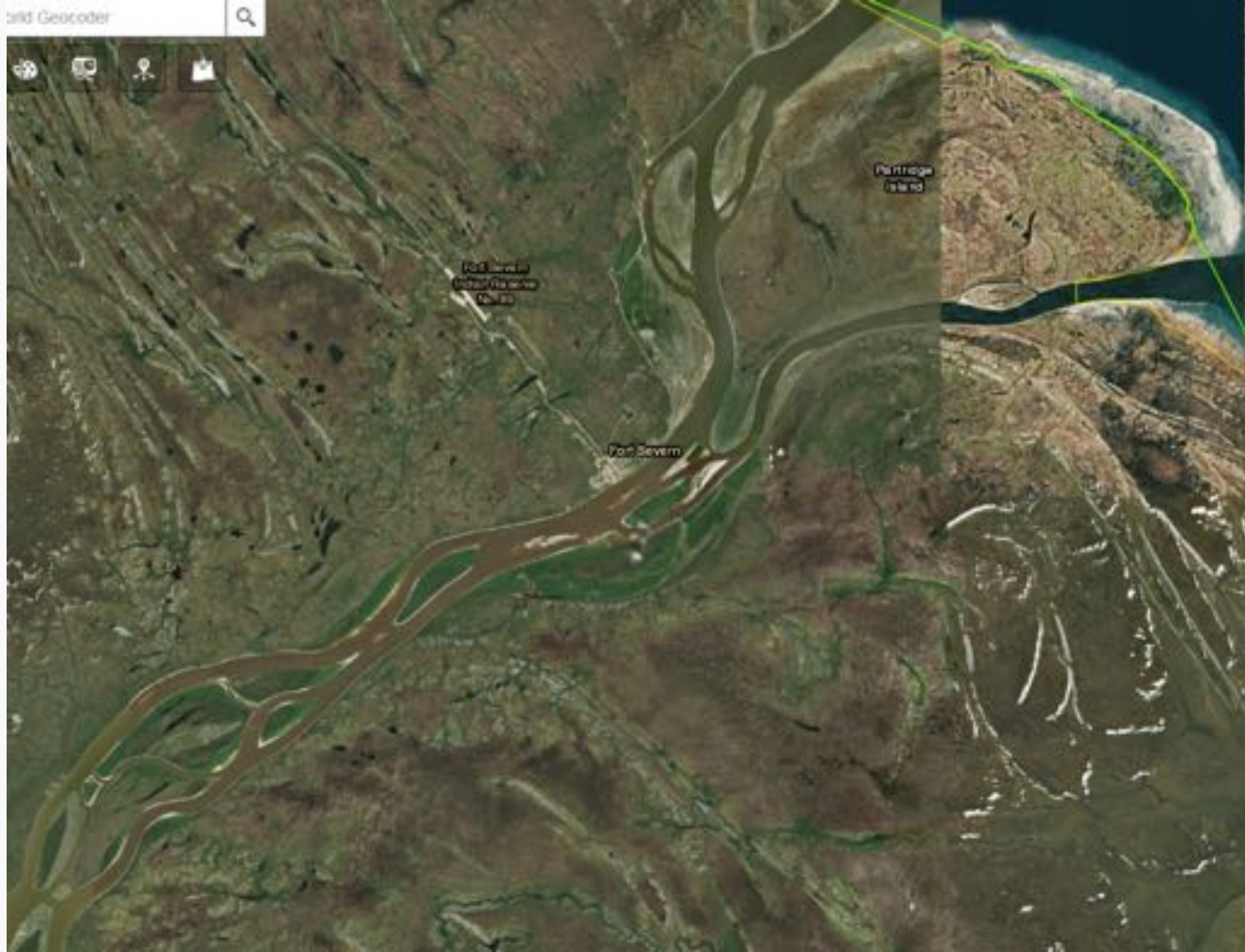
13 July, 2015

Fort Severn River Bank Erosion (1815-2015)





DISTRICT OF KENYA





Geese



How much has the date of the arrival and departure of geese changed compared with the past ?

Are geese landing where they did in the past ?

What are people doing to find the geese they need ?


How does weather affect northern First Nation communities in Ontario ?

Weather has an impact on communities in many different ways. As climate changes some of those impacts are becoming worse. Some, like thinner winter ice, are becoming dangerous.

It is important to adapt to what is happening now and to prepare for what might happen during the next two or three generations. What are you seeing in your community ?

Community _____

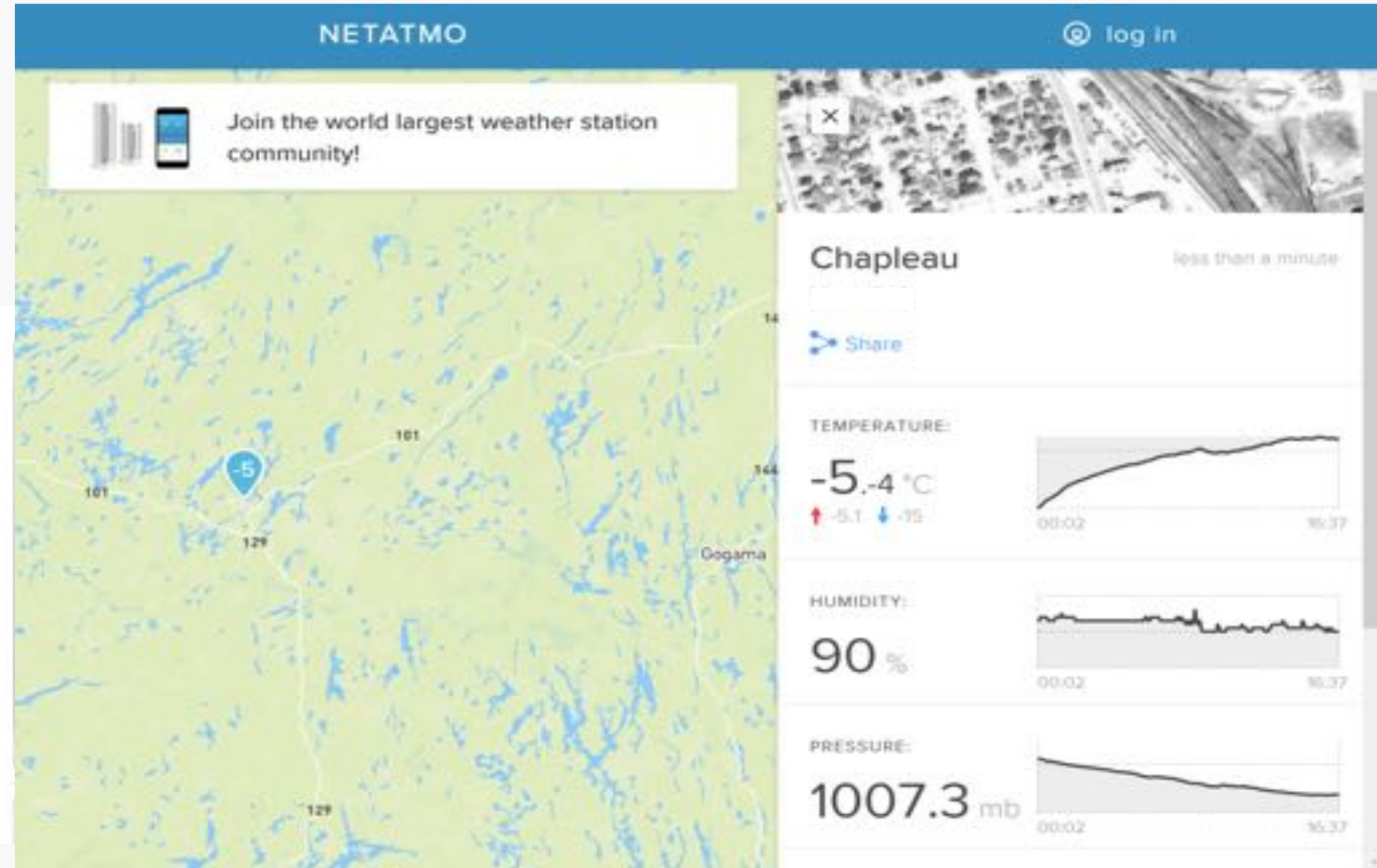
April 2018

<input type="checkbox"/> Tick if seen	flooding of ditches and buildings as late winter and early spring rain falls on frozen ground – rapid snow melt might happen too. Comments -	
<input type="checkbox"/>	flooding over banks of rivers caused by ice jams during break-up. Comments -	
<input type="checkbox"/>	flooding over the banks of rivers or lakes during rapid snow melt. Comments -	
<input type="checkbox"/>	sudden flooding in summer during heavy rain storms, especially in places with poor drainage in communities. Comments -	



Monitoring Tools

Weather – Netatmo Weather station



Information Tools



[HOME](#) [ABOUT](#) [CLIMATE CHANGE](#) [COMMUNITIES](#) [RESOURCES](#) [2018 CONFERENCE](#) [CONTACT](#)

"What will the weather be like when today's youth become Elders?"